



A Brightest Experience

www.galaxysiriusonboard.com





Index

About Galaxy Sirius	2	Deck Plan	10
Social Areas	6	Salvage and Equipment	11
Cuisine	8	Itineraries	12
Technical and Safety Features	9		

*When luxury meets adventure:
Discover the Galapagos
Islands aboard the Galaxy Sirius*

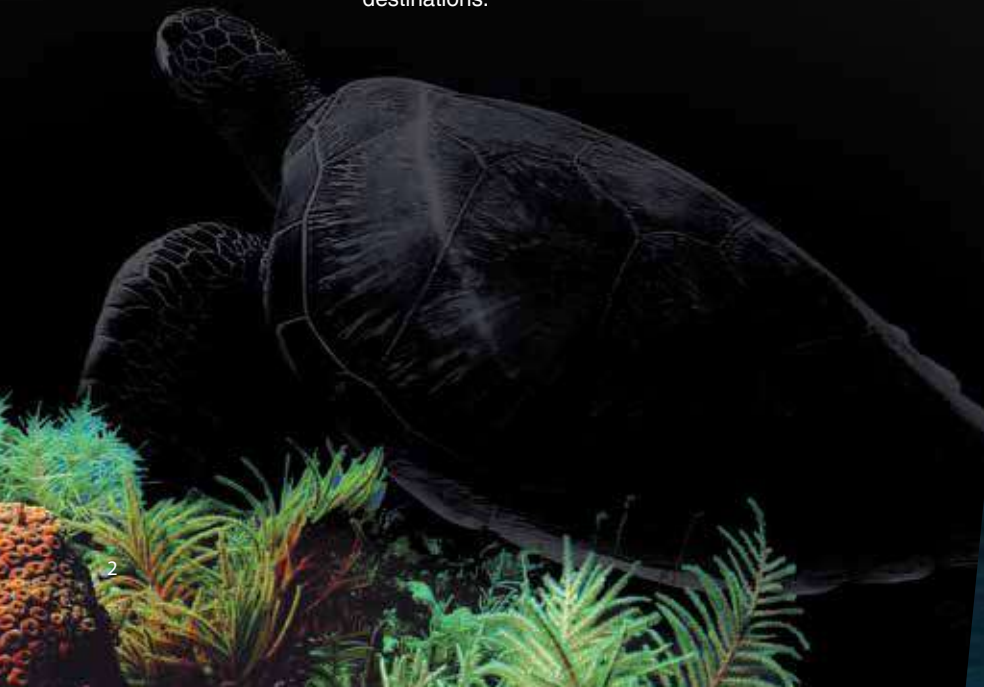
Immerse yourself in the opulent splendor of the Galaxy Sirius, a lavish vessel masterfully crafted to deliver unparalleled comfort and serenity. Adorned with sophisticated décor and boasting state-of-the-art amenities, this exceptional ship promises an extraordinary sailing experience as you traverse the enchanting Galapagos Islands.



The Galaxy Sirius accommodates up to 16 passengers comfortably.



Explore the best of the Galapagos Islands on a Galaxy Sirius journey, visiting pristine destinations.





About *Galaxy Sirius*

> Exclusive experiences

Explore the Galapagos Islands in the utmost elegance onboard our new luxury vessel, which features exquisite craftsmanship, cutting-edge amenities, and personalized service. Enjoy unparalleled luxury at sea while embarking on a once-in-a-lifetime voyage to discover pristine beauty and captivating fauna.



> Facilities

- Versatile, convertible beds
- Distinct, exclusive décor
- Expansive ocean-view windows
- Intimate private balconies
- Generously-sized closets
- Customizable air conditioning
- Multifunctional drawer and writing desk
- Wifi On board



Social Areas

➤ Dining room

Savor gourmet cuisine in the elegant Galaxy Sirius dining room, featuring stunning ocean views and a comfortable ambiance. Share memorable experiences with fellow passengers while enjoying expertly crafted dishes during your remarkable Galapagos journey.

➤ Lounge

Unwind in the sophisticated Galaxy Sirius lounge, a haven for relaxation, conversation, and refreshments. Revel in the plush seating and immerse yourself in the convivial atmosphere, as a wide-screen TV sets the stage for shared moments. Forge cherished connections with fellow passengers in this inviting sanctuary of leisure and camaraderie.





Cuisine

Technical Et Safety Features



> **Dimensions**

Lenght: 36.62 mts/ 120.14 ft
Beam: 13.00 mts/ 42.65 ft

> **Performance**

Cruising speed: 12 knots
Engines: 2 Cumming Motors Qsm11
de 450 HP

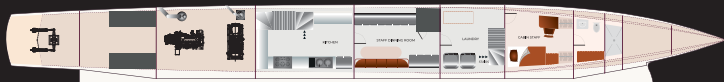
> **Capacity**

16 passengers, 8 Crew Members
1 Cruise Director , 2 bilingual guides

> **Operation and consumption**

110V and 220V

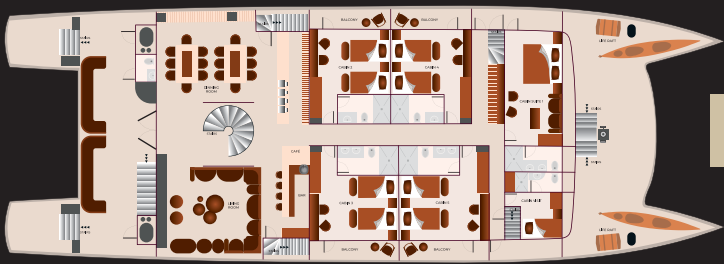
Deck Plan



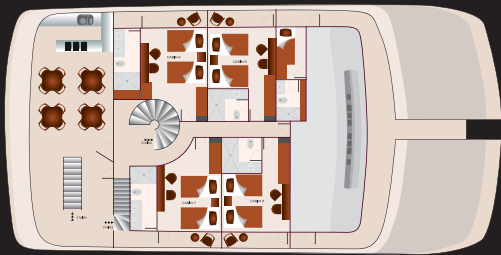
LOWER DECK



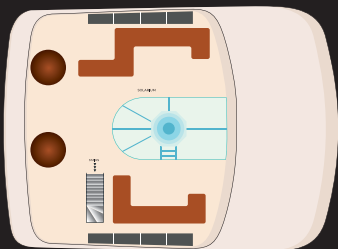
MAIN DECK



UPPER DECK



MASTERLY DECK



Salvage and Security Equipment

Your safety is our priority. The Galaxy Sirius has state-of-the-art safety gear, including life vests, emergency rafts, and advanced communication systems.



- ✓ 35 life jackets
- ✓ Four lifebuoys 9mm
- ✓ Flare guns, smoke signals, SOS flashlights, and other visual signals.
- ✓ Two survival rafts, 25 passengers each.
- ✓ Fire extinguishers 10 lb and 2lb.
- ✓ Fire hoses 15m.
- ✓ Fire detectors and complete fire protection system.

Itineraries

ITINERARY A

5 Days

Tuesday	AM	Reception in San Cristobal
	PM	San Cristobal: Lobos Island
Wednesday	AM	Espanola: Gardner Bay /Gardner Islet/Osborn Islet
	PM	Espanola: Suarez Point
Thursday	AM	Floreana: Post Office Bay
	PM	Floreana: Cormorant Point/Devil's Crown
Friday	AM	Santa Fe: Santa Fe
	PM	Plazas Sur: South Plaza
Saturday	AM	Santa Cruz: Charles Darwin Station



ITINERARY B

6 Days

Saturday	AM	Reception in Baltra and transfer to the boat
	PM	Santa Cruz: Highlands
Sunday	AM	Isabela: Moreno Point
	PM	Isabela: Elizabeth Bay
Monday	AM	Isabela: Urbina Bay
	PM	Isabela: Tagus Cove
Tuesday	AM	Fernandina: Espinoza Point
	PM	Isabela: Albermarle Point
Wednesday	AM	Santiago: Egas Port
	PM	Santiago: Espumilla Beach/ Buccaneer Cove
Thursday	AM	Santa Cruz: Dragon Hill



ITINERARY C

6 Days

Thursday	AM	Reception in Baltra and transfer to the boat
	PM	Santa Cruz: Black Turtle Cove
Friday	AM	Rabida: Rabida
	PM	Chineses Hat: Chineses Hat
Saturday	AM	Seymour: Seymour
	PM	Mosquera: Mosquera
Sunday	AM	Santiago: Sullivan Bay
	PM	Bartolome: Bartolome
Monday	AM	Genovesa: El Barranco
	PM	Genovesa: Darwin Bay
Tuesday	AM	San Cristobal: Interpretation Center

